

# Resident Information Brochure

## Doddsland Station

24-hour Emergency Number

# 1.800.727.7163

## Emergency Contacts

In the event of an emergency, Inter Pipeline will be working with the provincial and local authorities. Please review this information as it will help answer questions you may have around your role in the emergency response process.

### Inter Pipeline Contacts

<b>Mid Sask Pipeline Emergency Number</b>	<b>24 Hr:</b>	800.727.7163
Kindersley District Office	Bus:	306.463.5531
Inter Pipeline Ltd. – Calgary Head Office	Bus:	403.290.6000
	Toll free:	800.716.7473

### Local Authorities

<b>Police, Fire, Ambulance</b>	<b>911</b>	
<b>Saskatchewan Ministry of Environment</b>	<b>24 Hr:</b>	800.667.7525
<b>Saskatchewan Ministry of Economy</b>	<b>24 Hr:</b>	844.764.3637

### Government Contacts

Regional Municipality of Oakdale	Bus:	306.965.2281
Regional Municipality of Winslow	Bus:	306.356.2105

### Reception Centres

1. Nova Inn 100 12 Ave W, Kindersley, SK	Bus:	306.463.4642
2. Norman Ritchie Community Centre 1023 1 Street W, Kindersley, SK	Bus:	306.460.8618
3. Prairieland Community Centre 216 McPherson Street, Kerrobert, SK	Bus:	306.834.2361

Please familiarize yourself with the important information in this brochure. If you have any questions please contact the appropriate individual or agency from the list above. Additional information and a copy of this brochure can be found at [www.interpipeline.com](http://www.interpipeline.com).

01.02.2022

### Butane Release

- Leaks can either be liquid or vapour.
- Liquid leaks will rapidly flash off into vapour.
- Butane vapours are heavier than air and spread along the ground and/or accumulate in low areas.
- Vapours form explosive mixtures with air over a wide range of concentrations. Vapours are easily ignited by heat, sparks, or flames. Vapours may travel to the source of ignition and flash back.
- Stay upwind. Do not touch or walk through spilled material.
- Follow evacuation instructions as provided via IPL's Emergency Call-out System.
- Vapours may cause dizziness or asphyxiation without warning.

### Fire

Under fire conditions, tanks or tank trucks may violently rupture (BLEVE).

### BLEVE

BLEVE is an acronym for Boiling Liquid Expanding Vapour Explosion. It is the term for an uncontrolled fire and explosion of vapour as it escapes from a ruptured vessel of pressurized/ liquified gas. Such explosion can be extremely dangerous.

The hazards associated with a BLEVE include the initial impact of the blast, the fireball and radiation from the explosion and projectiles that are rocketed from the explosion.

In the event of a BLEVE follow the response actions listed below:

- Leave the area immediately if you hear a rising sound from venting safety devices or see discoloration of the tank
- When in a safe location call 9-1-1

### High Vapour Pressure (HVP) Products

HVP products include propane, butane, pentane, and Natural Gas Liquids (NGLs). At atmospheric pressure, HVP products are gases. Under pressure, HVP products exist in a liquid state. In humid air, a leak of an HVP product may form a visible white cloud of cold vapour considerably heavier than air. Under extreme conditions, pools of super-cooled liquid may briefly form. When HVP products vapourize, they expand (70 to 300 times) and can form a plume, which may drift downwind from the source under moderate wind speed conditions. Under higher wind speed conditions, the vapour would dissipate faster.

#### Main hazards:

- Potential explosion hazards from delaying ignition of drifting vapour cloud.
- Fire hazard from burning gas and radiant heat.
- Critical hazard because of oxygen deficiency as expanding gas cloud or plume displaces air at ground level.

### Potential Health Effects

AREA	HAZARD	FIRST AID
Eyes	- gas has no known effects on eyes - contact with liquified gas escaping from its cylinder may cause frostbite or burns. Permanent eye damage or blindness could result	- no effects expected - if irritation occurs, move to fresh air and if irritation persists, obtain medical advice - if frostbite has occurred, quickly remove victim from source and briefly flush with lukewarm, gently flowing water. DO NOT attempt to re-warm. Cover both eyes with a sterile dressing. DO NOT allow victim to drink alcohol or smoke. Quickly transport victim to an emergency care facility
Skin	- gas has no known effects on skin - contact with liquified gas escaping from a high pressure cylinder may cause frostbite or burns. Signs and Symptoms may include: numbness, or a cold/ burning sensation, skin colour going pale, greyish/yellow, or red. Blistering may occur in severe cases	- as quickly as possible, remove contaminated clothing, shoes and leather goods. No health effects expected. If irritation occurs, flush with lukewarm, gently flowing water for 5 minutes. If irritation persists, obtain medical advice. - if frostbite has occurred, quickly remove victim from source and briefly flush with lukewarm, gently flowing water. DO NOT attempt to re-warm the affected area. Cover both eyes with a sterile dressing. DO NOT rub the area or apply direct heat. Gently remove clothing or jewellery that may restrict circulation. Carefully cut around any clothing that sticks to the skin, and remove the rest of the garment. Loosely cover the area affected with a sterile dressing. DO NOT allow victim to drink alcohol or smoke. Quickly transport victim to an emergency care facility
Inhalation	- at high concentrations it can displace oxygen and cause asphyxiation. - inhalation of this product may cause respiratory tract irritation and Central Nervous System (CNS) depression,	- if symptoms are experienced, remove source of contamination or move victim to fresh air and obtain medical advice. - symptoms may include: weakness, dizziness, slurred speech, drowsiness, unconsciousness, and in cases of severe exposure; coma and death
Ingestion	Not applicable route of exposure for gases	None considered necessary
Summarized from SDS sheets.		

### Emergency Planning Zone

The Doddsland Station has an assigned facility storage Emergency Planning Zone (EPZ) of 1600m. This EPZ is a safety measure based on the effects of a possible fire as per Transport Canada Emergency Response Guidebook.

Doddsland Station Information	
On-site Butane storage	196.2 Tonnes
Emergency Planning Zone (EPZ)	1600m (1.6km)

## Overview

As part of the public safety process, Inter Pipeline (IPL) has created this information brochure about its Doddsland Station which is located at 01-12-031-22 W3M in the Regional Municipality of Oakdale and Winslow. Doddsland Station is registered with Environment and Climate Change Canada under the Canadian Environmental Protection Act as an Environmental Emergency (E2) facility with the scheduled substance of butane and operates as a truck unloading facility for its oil. Doddsland Station is part of the Mid Sask Pipeline.

Please review this information as it will help to answer questions you may have around your role in the emergency response process.

IPL is the owner of Doddsland Station. IPL is required to have an emergency response plan (ERP) in place to respond to any incidents involving Doddsland Station and as such exercises it annually.

## Inter Pipeline and Local Authorities

Inter Pipeline has developed a comprehensive Emergency Response Plan (ERP) that identifies and defines personnel roles, communication systems, available resources, evacuation procedures and other emergency management information.

In the unlikely event of an emergency situation, Inter Pipeline will implement its ERP and will work with local authorities; including municipalities, to ensure public safety, protect the environment and control the emergency situation.

## Why are you being contacted

Although the probability of an incident is low, Inter Pipeline is making advance preparations to ensure your safety. Inter Pipeline would like to ensure that:

1. You are aware of the Emergency Response Plan
2. You are aware of the Reception Centre(s) and their locations
3. You are advised of methods of communication to be used in case of an emergency
4. You are advised of public protection measures

As part of Inter Pipeline's emergency management program, Inter Pipeline is seeking to obtain your personal contact information as you reside in the immediate area of our operations.

## Privacy of Personal Information

Inter Pipeline collects certain personal information from residents in order to enact the emergency measures as identified in this document. Inter Pipeline collects and uses this contact information for the sole purpose of administering its emergency response program.

## Public Preparedness and Notification

### What to do in an emergency

Immediately move away from the area. Travel at right angles to the wind until you can relocate upwind from the gas source.

**IF YOU HAVE A TELEPHONE**, immediately call the Inter Pipeline emergency phone number listed on this brochure and follow instructions outlined by personnel. You may also call the Saskatchewan Ministry of Environment emergency number as listed.

**IF YOU DO NOT HAVE A TELEPHONE**, As quickly as you can, get to a telephone, call the Inter Pipeline emergency phone number at the phone number listed on this brochure.

### Levels of Emergency

<b>ALERT</b>	<b>ON SITE ONLY:</b> Immediate control of the hazard with progressive resolution of the situation.
<b>LEVEL 1</b>	<b>Low Impact:</b> No danger outside the company property.
<b>LEVEL 2</b>	<b>Moderate Impact:</b> Potential exists for the emergency to extend beyond company property.
<b>LEVEL 3</b>	<b>High Impact:</b> Uncontrolled hazard; public safety is jeopardized.

### Emergency Callout System

**The Emergency Callout system** is a telephone messaging system. This system may be used to provide residents with emergency information or instructions. When the phone rings, and is answered, the system will automatically issue an informative message about the situation and on the appropriate public protection measures required. At the end of the message, the following menu options allow the resident to respond:

Action	Meaning
<b>Press "1"</b>	Confirm receipt of the message.
<b>Press "2"</b>	Resident requires assistance; a company representative will send someone to the location to assist the resident.
<b>Press "3"</b>	Request a call from a company representative.

If there is no acknowledgement by the resident, the system will continue to call and a company representative will be sent to the location.



**Sask 1st Call**  
[www.sask1stcall.com](http://www.sask1stcall.com)  
**1.866.828.4888**

## Public Protection Measures

### Shelter - In - Place

Shelter-in-place instructions are often given during the initial assessment and response period. These instructions are given to the public when:

- There is not enough time or warning to safely evacuate members of the public who may be at risk
- Residents are awaiting evacuation assistance
- During a gas release of limited duration
- The location of the release has not been identified
- The public would be at higher risk if evacuated.

Shelter-in-place is the use of a structure and its indoor atmosphere to temporarily separate individuals from a hazardous outdoor atmosphere. If asked to shelter-in-place:

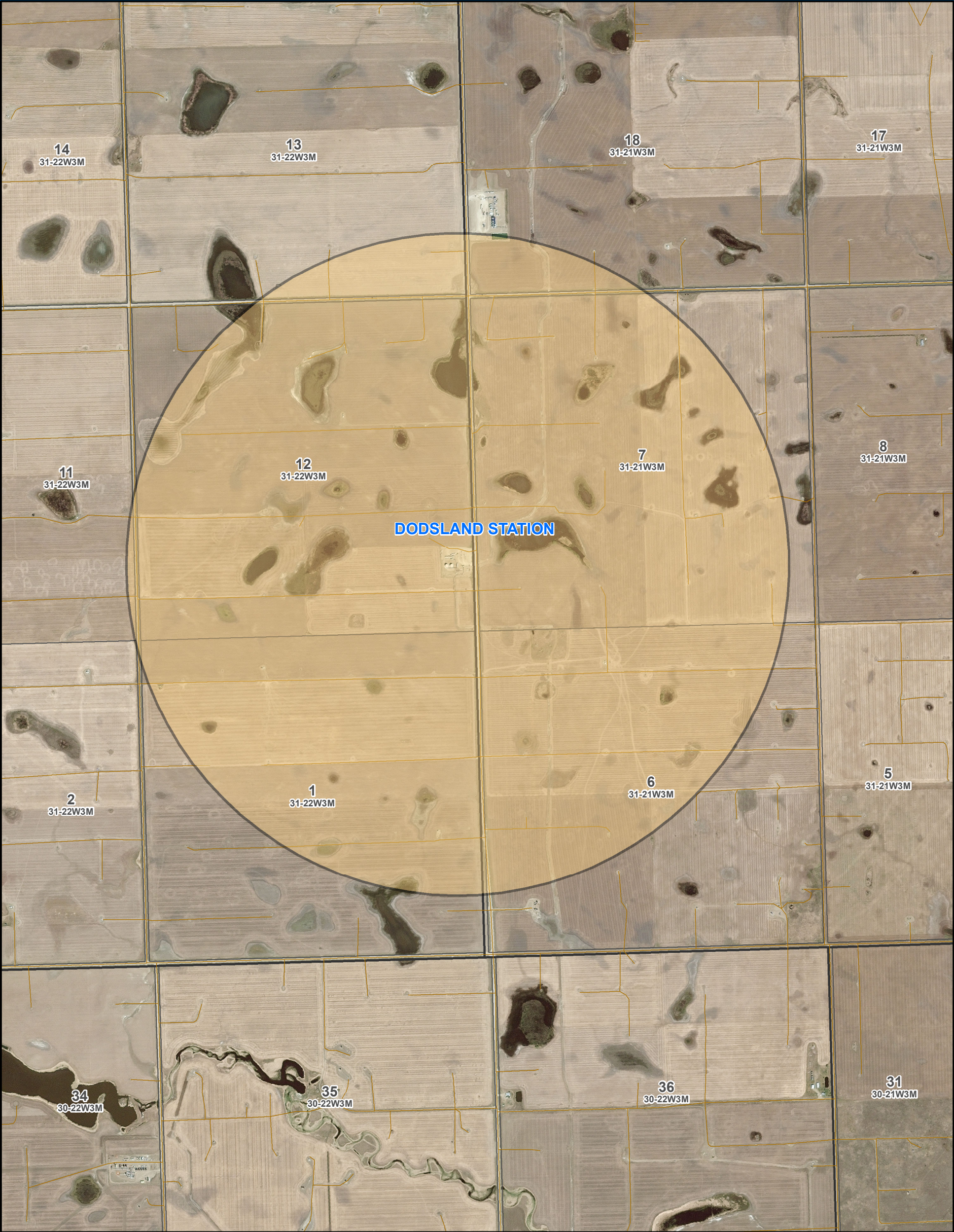
- Immediately gather everyone indoors and stay there
- Close and lock all windows and outside doors/vents
- If convenient, tape or block the gaps around the exterior door frames
- Avoid using the telephone, except for emergencies, so that you can be contacted by Inter Pipeline personnel
- Call Inter Pipeline's emergency number provided on the front of the brochure if:
  - you are experiencing symptoms or smelling sulphur odours
  - you have contacted fire, police or ambulance (so that we can coordinate our response)
- Stay tuned to local radio and television for information updates
- Even if you see people outside, do not leave until told it is safe to do so
- When it is safe, you will receive an "all-clear" message from Inter Pipeline's emergency callout system

### Evacuation

- **If you are advised to evacuate please do so immediately. Although you may not appear to be in danger, a shift in wind direction or increased concentrations of gas could change the situation rapidly.**
- **If there is no answer to our telephone calls, personnel will be dispatched to your residence/business to verify your location and inform you of the situation.**
- If you have no means of transportation, or if you require evacuation assistance, Inter Pipeline or local authorities will dispatch a vehicle to assist you.
- A Reception Centre will be established and you will be advised of the location. Please proceed to the Reception Centre by the designated route. If you choose to go elsewhere, please indicate this to the person contacting you.

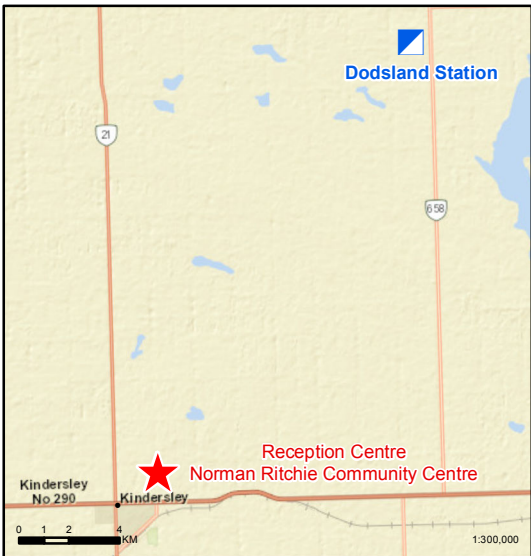
At the Reception Centre, Inter Pipeline representatives will be available to address any questions or concerns.





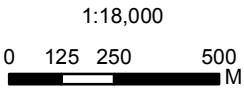
**LEGEND**

- Station
- Local Road
- Emergency Planning Zone (1.6 km Radius)



**inter pipeline**

**Dodsland Station**  
01.02.2022



Coordinate System: NAD 1983 UTM Zone 12N  
Created by: GIS/Drafting Group  
Note: Paper Copies are uncontrolled.  
This copy is valid only at the time of printing.

